



Synchronous&Asynchronous Sending Card M80B-S

Product Specification

Version: Ver.1.3

Statement

Dear user friend, thanks for choosing SHENZHEN SYSOLUTION TECHNOLOGY CO.,LTD (hereinafter referred to as Xixun Technology) as your LED advertising equipment control system. The main purpose of this document is to help you quickly understand and use the product. We strive to be precise and reliable when writing the document, and the content may be modified or changed at any time without notice.

Copyright

The copyright of this document belongs to Xixun Technology. Without the written permission of our company, no unit or individual may copy or extract the content of this article in any form.

Trademark



is a registered trademark of Xixun Technology.

Update Record

No.	Version	Update	Revise
1	Ver.1.0	Initial	2023.01.04
2	Ver.1.1	Updated parameter	2023.11.17
3	Ver.1.2	Updated parameter	2024.03.15
4	Ver.1.2	Updated product pictures	2024.05.21

The document is subject to change without prior notice.

Introduction

M80B-S is a highly integrated and high performance quad-core Cortex-A17 core board. M80B-S can run at up to 1.8GHz, is equipped with standard 2G RAM and 16GB EMMC high speed flash memory, and supports synchronous HDMI output signals. It is suitable for commercial display field, such as mirror screen, advertising machine, light pole screen and various applications.

With the development of LED display industry, it needs to support HDMI output monitoring in some fields, as well as wired network, 4G, WiFi wireless transmission, remote cluster control, and also needs to be able to be controlled via cell phone. Sysolution M80B-S is tailor-made for these needs.

Product Picture

Front:



Back:

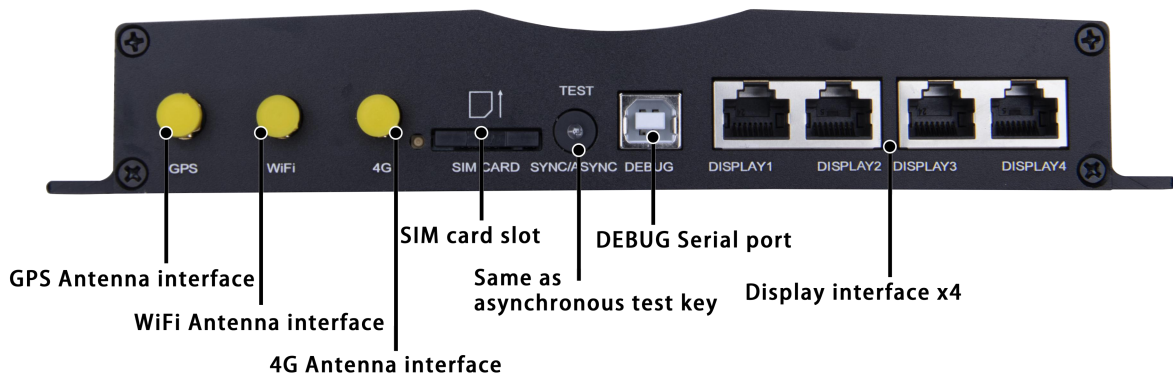
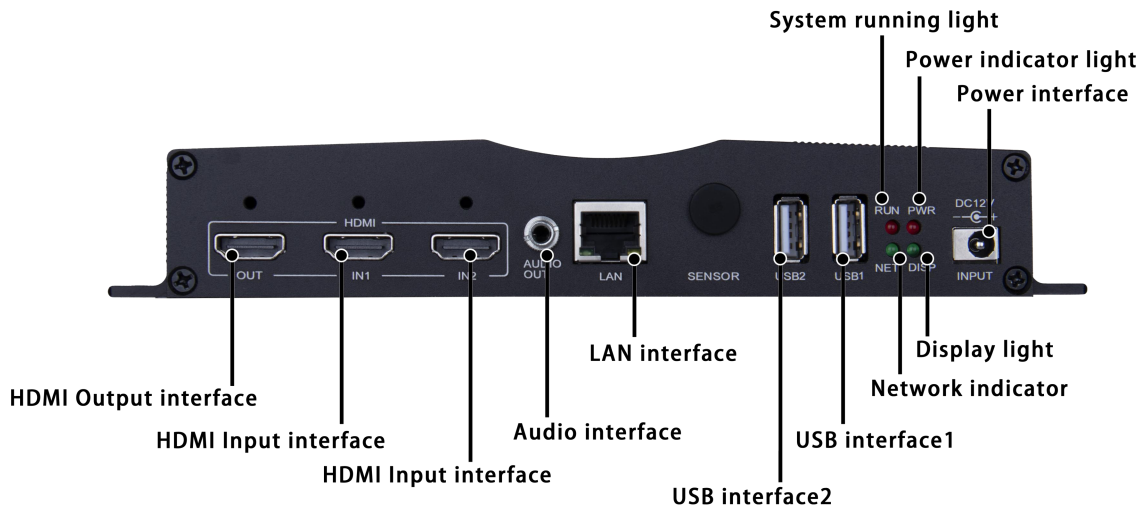


M80B-S Product Picture

Functional Characteristics

1. Supports 2 HDMI inputs and 1 output;
2. Integrated state-secured chip, ensuring the security of information dissemination in hardware;
3. Standard two-way remote power cut; Support RS485 and RS232 terminal interfaces, easily accessing to various industries IOT sensors;
4. Support 12V wide voltage power supply;
5. Support remote IP to broadcast mp3 audio voice ; Support remote IP to broadcast text-to-speech automatically; Support remote shouting, remote calling, one-button alarm, visual intercom;
6. Support Lora module multi-screen wireless synchronous playing mechanism;
7. On-board automatic luminance sensor interface, the luminance probe can be directly plugged and then can be used to adjust the luminance automatically;
8. On-board WiFi module, support AP mode and Station mode, optional 4G;
9. Built-in Web Sever, support local web production, support computer, iPhone, Android phone, tablet stand-alone program editing, cross-platform system full compatibility;
10. Video hard decoding, support 1080P, mainstream video, picture formats and text editing;
11. Support full-color static to 32-scan led module, General chip high refresh, high brightness, high gray scale;
12. Support driver chips from various chip manufacturers ; Support USB camera ; Support receiving card storage parameters (with the sixth generation receiving card);

Interface Marking



Product Parameters

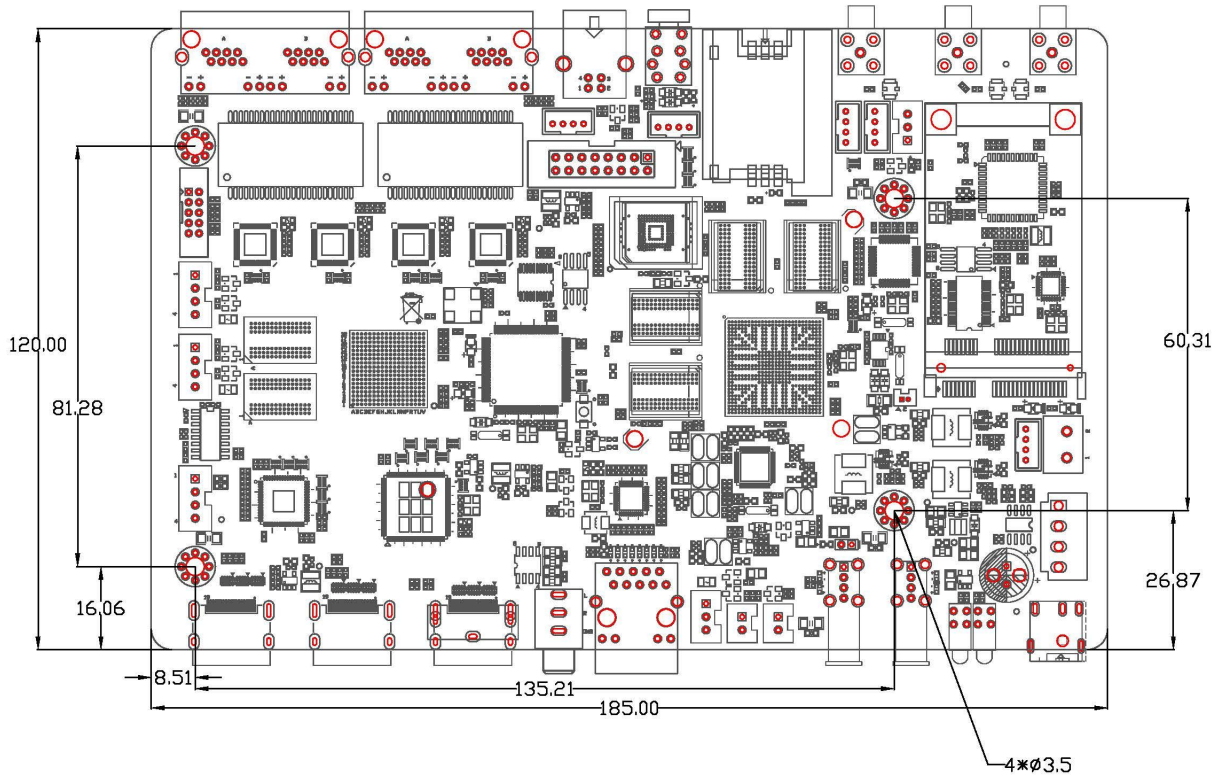
Main Hardware Indicators	
CPU	Rexchip Micro RK3288 Quad-Core 1.8GHz Cortex-A17
GPU	Quad-core GPU Mail-T764
RAM	2G
Built-in Memory	EMMC 16G
Built-in ROM	2KB EEPROM
Loading Pixels	M80B-S Synchronous/Asynchronous Media player Four Ethernet ports, support 2.3 million pixels, Support discount maximum width 350000 maximum height 2560
Operating System	Android 7.1
Playing Mode	Support loop, timing, interpolation and other playing modes
Network Support	4G, Ethernet, WiFi or Bluetooth 4.0 support, wireless peripheral expansion
Video Play	Support MP4 (AVC/H.264, DIVX, XVID) format
USB2.0 Interface	1 ↑ USB HOST、1 ↑ USB OTG
Serial Port	IIC / TTL / 485

GPS	External GPS (optional)
WIFI、 BT	Built-in WIFI, BT4.0 (optional)
4G	Built-in 4G module communication (optional)
Ethernet	1 x, 10M/100M/1000M Adaptive Ethernet
HDMI Output	Support
Audio Output	3.5mm audio port
Amplifier Output	The maximum power of the couch under 4Ω BTL load condition at 12V power supply is 2*30W, the smaller the voltage the smaller the speaker power.
Configuration Software	LedOK Express

Working Parameters

Working Parameters	
Input Voltage (V)	Independent DC power supply, 12V/6A or more, system and 30W speaker power supply at the same time.
Operating temperature (°C)	-30~75°C
Working Humidity (%)	0%~80% Non-condensing
Storage Temperature (°C)	-40~80°C Recommend 5~35°C
Dimension (mm)	185 (L) x 120 (W)

Dimension



Dimensions of the M80B-S mainboard

Unit: mm

Accessories

Optional Accessories	Accessory Functions
Luminance sensor RL2	Monitoring the brightness of the current environment
Temperature sensor RT1	Detecting the current temperature of the external environment
Humidity sensor RH1	Detecting the humidity of the current external environment
Eight-element environmental sensor R68	Temperature, humidity, illumination, PM2.5, PM10, noise, wind speed, wind direction
Power Statistics Sensor RM1257	Real-time platform statistics for daily power
30W loudspeaker RLB1*2	IP emergency broadcasting
Double light controller R6B32	Enables the color temperature and brightness of LED lamps to be changed

Cautions

1. Strictly forbid disassembling the product by yourself.
2. Strictly forbid plugging and unplugging the antenna with electricity.
3. Strictly forbid sharing the screen body 200W/5V switching power supply to the card.

Otherwise, it will causes the system to operate unstably and lower the speaker sound.